

# SOPRAS TEK

## BADASS DIVERS

### NEW PRODUCTS 2018



806983

### SY100

ANSI	High	Medium	Low	Strobe
Lumen Output	1050Lumens	/	360Lumens	1050Lumens
Runtime(1*18650)	2 Hours	/	5 Hours	/
Luminous Intensity	7800cd			
Beam Distance	170m			
Drop Resistance	1.5m			
Waterproof	IPX-8.(underwater 100m)			
Dimension	29(head dia.) 24(tube dia.) 134(length)mm			
Net Weight	103g(excluding battery)			
Underwater Weight	80g(including battery)			

1050 lumens with 10 degree focus LED light. Suitable as main light or backup light for recreational and technical diving. Button switch to turn on/off and with 4 lighting modes: high, medium, low, and strobe. Utilizes 1\*Cree XM-L2 (U4) LED chip with maximum 1050 lumens output. Powered by 1\*18650 rechargeable lithium battery with maximum runtime at low mode of up to 5 hours. This diving flashlight is waterproof up to 100 meters deep underwater. Included: recharger, batteries, spare O-rings, lanyard, user manual and box.

806986

### SY450

4500 lumens with 120 degree wide LED video light. Suitable as main light for recreational diving, technical diving, and underwater videography. Button switch to turn on/off and with 5 lighting modes: high, medium, low, very low, and strobe. Utilizes 6\*Cree XM-L2 (U4) LED chip with maximum 4500 lumens output. Powered by 3\*26650 rechargeable lithium battery with maximum runtime at low mode of up to 9.5 hours! This diving flashlight is waterproof up to 200 meters deep underwater. Standard accessories includes: recharger, batteries spare O-rings, lanyard, user manual and plastic box.

ANSI	High	Medium	Low	Very low	Strobe
Lumen Output	4500Lumens	2800Lumens	600Lumens	650Lumens	3000Lumens
Runtime(3*26650)	1.5Hours	2.6Hours	5 Hours	9.5Hours	/
Luminous Intensity	1300cd				
Beam Distance	72m				
Drop Resistance	1.5m				
Waterproof Grade	IPX-8.(underwater 200m)				
Dimension	Head:66(Dia)*75.5Lmm;Canister:35(Dia)*258(L)mm				
Net Weight	930g(excluding battery)				
Underwater Weight	645g(including battery)				

All our torches from the SY line have the following common features:

- Integrated microprocessor maintaining a constant current and preventing over-heating
- Reverse polarity protection preventing circuit break from wrong battery installing
- Constructed with aircraft-grade T6061-T6 aluminum
- 5 mm toughened glass lens, coupled with three O rings for maximum waterproofness
- Premium type III military hard-anodized finish providing excellent abrasion and corrosion resistance

### CHARGER FOR SY100 AND SY105



806984

### SY105

ANSI	High	Medium	Low	Strobe	SOS
Lumen Output	1050Lumens	330Lumens	120Lumens	1050Lumens	/
Runtime(1*18650)	1.5Hours	2Hours	7Hours	/	/
Luminous Intensity	15400cd				
Beam Distance	250m				
Drop Resistance	1.5m				
Waterproof Grade	IPX-8.(underwater 150m)				
Dimension	Head:41(head dia.) 25(tube dia.) 146(length)mm				
Net Weight	180g(excluding battery)				
Underwater Weight	120g(including battery)				

1050 lumens with 10 degree focus LED light. Suitable as main light or backup light for recreational and technical diving. Rotary switch with 5 lighting modes: High, medium, low, strobe and SOS. Utilizes 1\*Cree XM-L2 (U4) LED chip with maximum 1050 lumens output. Powered by 1\*18650 rechargeable lithium battery with maximum runtime at low mode of up to 7 hours. This diving flashlight is waterproof up to 150 meters deep underwater. Included: recharger, batteries, spare O-rings, lanyard, user manual and box.



### CHARGER FOR SY450



# HARNESSES

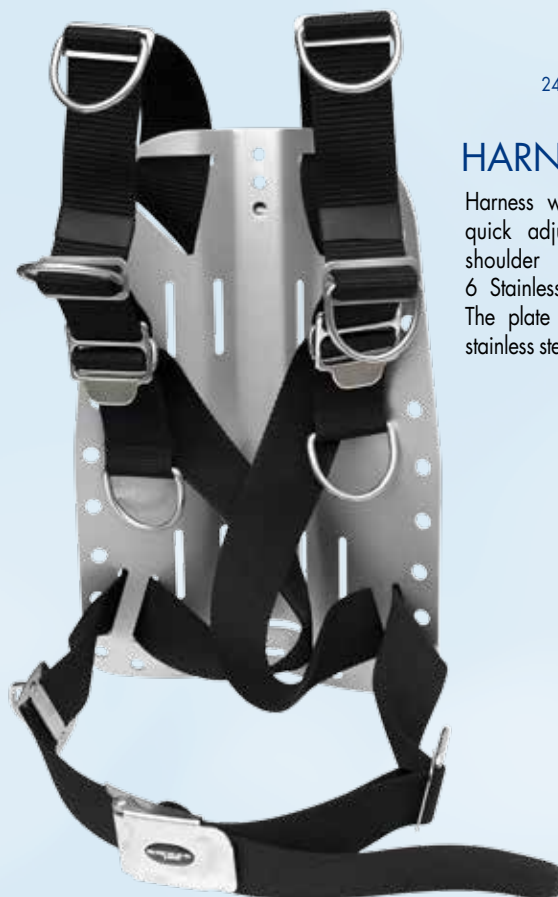


240130 on S.S. plate

240131 on alu plate

## HARNESS DETACHABLE

Are you having a hard time wearing and unwearing your harness? Harness Detach with quick release buckle on the left shoulder is the solution! The shoulder straps length is adjustable. A chest strap guarantees a tight fitting. 6 Stainless steel D rings. The plate is available in stainless steel or aluminium.



240120 on S.S. plate

240121 on alu plate

## HARNESS ADJ

Harness with buckles for quick adjustment of the shoulder straps length. 6 Stainless steel D rings. The plate is available in stainless steel or aluminium.

240100 standard strap on S.S. plate  
240101 standard strap on alu plate

240110 hard strap on S.S. plate  
240111 hard strap on alu plate

## HARNESS DIR

DIR style harness with simplistic approach. One can choose either standard or hard strap. The plate is available in stainless steel or aluminium.



240043

## HARNESS SOFT

Light and travel friendly soft harness with aluminium rings and buckles. Can be attached to any of our bladders with 2 special stainless steel screws. Options for weight pockets includes 5 different colors and 2 sizes (see page 7).



## LOW VOLUME BLADDERS

We have 3 different styles of low volume bladders for single tank use: Tekno Donut 14L Light, Ultra Light Tek and Donut SM. The inflator is 400 mm / 16" Long. From red, black, pink or blue camou, to bullet proof kevlar, our bladders come with various combinations of colours and material to match your style.

240060 colour:  240065 colour:  240062 Kevlar • colour:   
 240064 colour:  240061 colour: 

### TEKNO DONUT LIGHT 14L



240005 colour:   240008 colour:  240007 Kevlar • colour:   
 240006 colour:  240009 colour: 

### ULTRA LIGHT TEK 12L





## LOW VOLUME BLADDERS

240094

### DONUT SM KEVLAR 14L



## COMPLETE SET UPS

240099 Alu/SS • colour: ■ ■ ■ ■

### LZ DONUT SM 14L WITH HARD PLATE COMPLETE SET UP

This Set up includes a small 14 litres SM style bladder with red, black, pink or blue camouflage. It features double cylinder straps with SS buckles, extremely flexible oval inflator hose and a single tank adapter. Available with both aluminum or stainless steel backplate. Thick padding on backplate and shoulder straps together with the soft neoprene layer on the crotch strap ensure your comfort and protect your suit from abrasion! There are 8 stainless steel D rings in total and a stainless steel waist buckle.



240098

## LZ ULTRA LIGHT 11L WITH HARD PLATE COMPLETE SET UP

This set up includes a small 11 litres Ultra Light style bladder mounted on a harness with aluminum backplate. It features double cylinder straps, extremely flexible oval inflator hose and a single tank adapter. Thick padding on backplate and shoulder straps together with a soft neoprene layer on the crotch strap ensure your comfort and protect your suit from abrasion! There are 8 stainless steel D rings in total and a stainless steel waist buckle.



Set up composed by:  
240043 Harness Soft  
+ 240008 Bladder  
Ultra Light TEK Pink



## COMPLETE SETUP EXAMPLES

Set up composed by:  
Black back plate  
in Aluminum  
+ 240111 Harness DIR  
+ 240309 Pink  
weight pockets  
+ 240335  
Shoulder covers



Set up composed by:  
230310 Blue back plate in aluminum  
+ 240121 Harness ADJ + 240309 Blue weight pockets  
+ 240335 Shoulder covers + 240350 Pocket for buoy





# COMPLETE SET UPS

size: one for all 11 kg / 24 lb • Nylon 290 • colour: ■ ■ ■ ■

Set up composed by: Harness 240170 + Donuts 240042 (red), 240044 (kevlar), 240045 (pink), 240047 (blue)

Combination of our Harness Ultra Light Hard (using the small black anodized BP 219.97) with the Ultra Light Donut (available in 4 different colours). Very streamlined set up suitable for single tank diving. Pockets can be in the same colour as the donut. The polstering on the plate and shoulder padding ensures maximum comfort. Adjustable harness strap system. The crotch strap in 25mm webbing and coupled with a chest buckle ensure perfect fit. Quick release weight pockets (available in 5 different colours, see page 7) on the waist strap. All the rings and the waist buckle are in black anodized aluminium for minimum weight.



Harness 240170 + Donut (kevlar) 240044  
+ 240309 (black weight pockets)

Harness 240170 + Donut (blue) 240047  
+ 240309 (blue weight pockets)

240170 size: one for all 25 kg / 55 lb  
• Nylon 290 • colour: ■

## HARNESS ULTRA LIGHT HARD

Includes 2 tank straps, soft single tank adapter, quick release waist weight pockets (in 5 different colours see page 7), ultralight black anodized aluminium plate (219.97) covered with a comfortable polstering, shoulder padding, crotch strap, chest buckle.

240042 colour: ■

240045 colour: ■

240044 Kevlar • colour: ■

240047 colour: ■

## ULTRA LIGHT DONUT 12L

Available in 4 different colour combinations



219.97

## BP BLACK ANODIZED

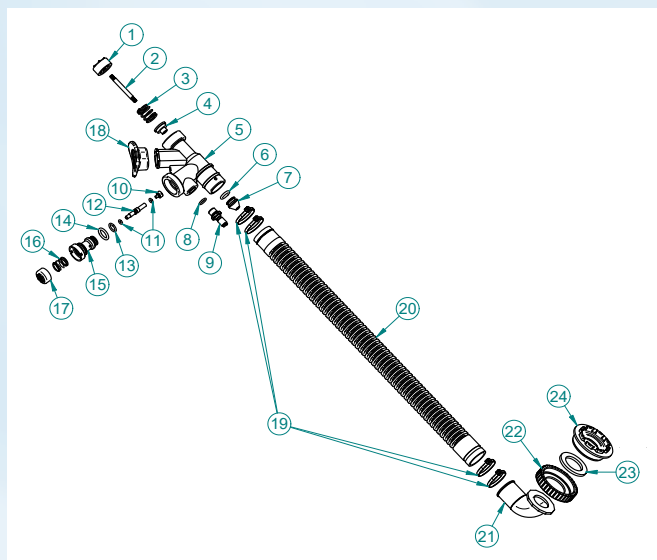
Black anodized ultralight back plate in aluminium.



# ACCESSORIES OR REPLACEMENT PARTS FOR BCS

1C000257 Airway • with oval hose • 12"  
 1C000254 Airway • with oval hose • 14"  
 1C000256 Airway • with oval hose • 16"

## INFLATOR TEK



All our weight pockets are available in black, pink, white, blue, kevlar. There are two sizes (for max 2 or 3kgs respectively) and can be attached to the waist webbing strap with a glider or to the back plate with a screw.

240306 colour: ■ ■ ■ ■ ■

## WEIGHT POCKETS SMALL WITH GLIDER



240307 colour: ■ ■ ■ ■ ■

## WEIGHT POCKETS LARGE WITH GLIDER



240308 colour: ■ ■ ■ ■ ■

## WEIGHT POCKETS SMALL FOR BP



240309 colour: ■ ■ ■ ■ ■

## WEIGHT POCKETS LARGE FOR BP



attachment to our small back plate



attachment to the waist strap



attachment to the back plate



# COMPLETE BCS

## COMPACT LITE 14L

Built for travellers, Compact Lite 14L is a light and streamlined BCD weighing only 2.5 kg. The bladder has a volume of 14 liters and comes in red, black, pink or blue camouflage as well as bullet proof kevlar. The shoulder buckles are secured with a bungee to facilitate the wearing and to increase safety by preventing complete opening of the shoulder strap in case of an unwanted opening or malfunctioning of the buckle. Side pockets are attached to the waist strap with a glider and are available in more colour combinations (see page 7). The tank is fixed in three different positions: with a standard cam buckle cylinder strap, a simple velcro cylinder strap and 25mm webbing strap to be tightened around the neck of the tank. Additional weights can be put in the 2 weight pockets (each up to 2,5kgs) on the single tank stabilizer. This BCD can be used with a single 12l cylinder. The inflator is 400 mm / 16" long. 6 aluminium D rings. Available with quick adjust waist plastic buckle or aluminium buckle on request.



The additional bungees will prevent the complete opening of the shoulder strap in case of opening or malfunctioning of the buckle during the dive.

cylinder strap with rubber coating on the inside



cylinder straps with weight pocket and tank stabilizer

Securing the tank with the upper 25mm webbing around the neck and valve is very important!



fitting on a 10 litres tank



fitting on a tank with 203 mm diameter

240071 colour: ■



240069 Kevlar • colour: ■



240070 colour: ■



240066 colour: ■



240067 colour: ■





240082 Sidemount BC, 1225 Tec • no buckle no valve at the top • colour: 

240083 Sidemount BC, 1225 Rec • with buckle and valve at top back • colour: 

## SIDEMOUNT BC 1225

Our sidemount BC 1225 has a 12 liters bladder that comes in 4 different colours: blue or pink camou, red and black. 4 pockets for weights (for total 8kgs) are positioned between the back of the harness and the bladder and ensure perfect trim control, being attached to your back and one over the other, allowing positioning of the weight at the desired height. Comfort is guaranteed by shoulder covers and a soft padding on the back. There are two versions: Rec and Tek. The Rec version has quick release buckles on the shoulders for easier adjustment and wearing and a second OPR valve on the top corner of the bladder for vertical deflation. The crotch strap is made of 50mm webbing covered by a soft neoprene layer that will protect your suit from abrasion.



detail of the adjustable shoulder buckle



detail of the second OPR valve for the REC version



# SIDEMOUNT BCS

Harness for Sidemount MOD (240028)  
+ main 15l bladder (240021 or 240022 or 240023)  
+ additional 12l bladder (240026)

## SIDEMOUNT MODULAR 15+12

Advantages:

- The harness is 100% modular and very quickly adjustable to any body size
- 4x2kgs weight pockets on your back allow perfect trim control (on demand 4x3kgs)
- Additional quick release 1kg weight pockets with gliders to be positioned on your shoulders, waist or any other webbing strap
- Two interchangeable bladders:  
Main bladder: 15kgs lift  
Secondary bladder 12kgs lift
- Possibility to use bungees with double ended hooks to make the bladders removable even during the dive
- Separate butt and battery plates on your crotch strap
- Large pockets for accessories included
- Crotch strap in soft 50mm webbing



240021 colour: ■  
240022 colour: ■  
240023 colour: ■

## BLADDER SIDEMOUNT MOD



240026

## ADDITIONAL BLADDER

240027

## ACCESSORIES POUCH

With small compartments  
and net for water drainage



240029

## QUICK RELEASE WEIGHT POCKET

Fits a 1kg weight and can be  
positioned anywhere on the  
webbing strap allowing a per-  
fect fine tuning of your trim!





852001

## REGULATOR BAG

Spacious and padded bag for regulators with pockets to store additional small items



522400

## COMPASS WITH BUNGEE



## OTHERS

805017  
805018

## ALUMINUM REELS

Line of 30 meters (100ft)



80552/1-3 size: S/M, M/L, L/XL

## WEIGHT BELT FOR DRY SUITS

Can hold up to 20kgs!

804250-2 size: S,M,L

## WEIGHT BELT

Available in 3 sizes this belt can hold up to 15kgs in size L. Stainless steel weight belt included



New metal springs for fins covered by a resistant webbing and with a rubber puller

41602/S-XL



41608/S-XL



41606/S-XL



## REGULATOR HOSE BRAIDED

900531 20cm/8"

## BRAIDED BCD HOSE FOR SIDEMOUNT

900542 150 cm / 60"

900543 210 cm / 82"

900546 200cm / 80"



900405 60cm/24"

900407 18cm/7"

900408 15cm/6"

## BRAIDED HP HOSE



# REGULATORS

631314

## 2.ST 2010 VENERE DIAMOND BAL.ADJ

Adjustable balanced second stage with dive/prelive knob and 72cm grey mesh hose.



Newly available on request!

First and second stages can be specially coated with pink, white or blue camou!

605249

605248



## MERCURIO

Balanced diaphragm 1st stage DIN or YOKE connection with 2HP ports on corpus and 5LP ports on a 360 degrees turning turret. All models have an ice chamber and viton o-rings for Nitrox mixes. Available with a satin chrome or durable black surface finishing.

605232 DIN satin chrome Ice



605234 DIN durable black Ice



## GIOVE

Balanced diaphragm 1st stage DIN or YOKE connection with 2HP and 5LP ports. All models have an ice chamber and viton o-rings for Nitrox mixes. Available with a satin chrome or durable black surface finishing.

605236 DIN satin chrome Ice



605238 DIN durable black Ice



 **soprastek**  
[www.soprastek.com](http://www.soprastek.com)

Diveproduction s.r.o.  
Cerveny Ujezd 267  
273 51 Unhost, Czech Republic  
[diving@sopras.cz](mailto:diving@sopras.cz)  
Tel.: +420 312 699 790  
Fax.: +420 312 699 792

Webshop for USA and Canada [www.soprassubusa.com](http://www.soprassubusa.com)



 **soprassub**  
[www.soprassub.com](http://www.soprassub.com)



 **soprasapnea**  
[www.soprasapnea.com](http://www.soprasapnea.com)